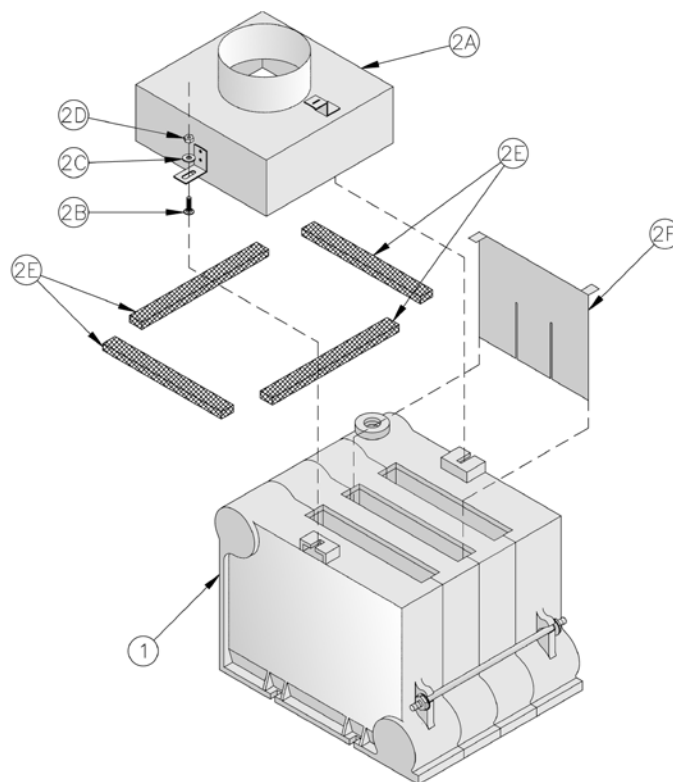


V. Repair Parts

Section Assembly and Canopy Group.....	30
Base Assembly	32
Manifold and Main Burners	
1 Inch Main Burners.....	34
40mm Main Burners.....	36
Pilot Burner and Gas Valve	
Continuous Ignition (Standing Pilot)	38
Electronic Ignition	40
Jacket Assembly	41
Water Trim	44
Controls.....	46
Draft Hood and Vent Damper.....	47

Key No.	Description	Part No.	Quantity										
			202	202X	203	204	205	206	207	208	209	210	
1. Section Assembly (Intermittent and Continuous Circulation Only)													
1	Section Assembly, Complete	617170221	1	---	---	---	---	---	---	---	---	---	
		617170321	---	1	1	---	---	---	---	---	---	---	
		617170421	---	---	---	1	---	---	---	---	---	---	
		617170521	---	---	---	---	1	---	---	---	---	---	
		617170621	---	---	---	---	---	1	---	---	---	---	
		617170721	---	---	---	---	---	---	1	---	---	---	
		617170821	---	---	---	---	---	---	---	1	---	---	
		617170921	---	---	---	---	---	---	---	---	1	---	
		617171021	---	---	---	---	---	---	---	---	1		
1. Section Assembly (Gravity Circulation Only)													
1	Section Assembly, Complete	617170231	1	---	---	---	---	---	---	---	---	---	
		617170331	---	1	1	---	---	---	---	---	---	---	
		617170431	---	---	---	1	---	---	---	---	---	---	
		617170531	---	---	---	---	1	---	---	---	---	---	
		617170631	---	---	---	---	---	1	---	---	---	---	
		617170731	---	---	---	---	---	---	1	---	---	---	
		617170831	---	---	---	---	---	---	---	1	---	---	
		617170931	---	---	---	---	---	---	---	---	1	---	
		617171031	---	---	---	---	---	---	---	---	1		

Key No.	Description	Part No.	Quantity									
			202	202X	203	204	205	206	207	208	209	210
2. Canopy Group												
2A	Canopy Assembly (except for 206H)	61117022	1	---	---	---	---	---	---	---	---	---
		611170300	---	1	---	---	---	---	---	---	---	---
		611170302	---	---	1	---	---	---	---	---	---	---
		611170402	---	---	---	1	---	---	---	---	---	---
		611170502	---	---	---	---	1	---	---	---	---	---
		611170602	---	---	---	---	---	1	---	---	---	---
		611170702	---	---	---	---	---	---	1	---	---	---
		611170802	---	---	---	---	---	---	---	1	---	---
		611170902	---	---	---	---	---	---	---	---	1	---
		611171002	---	---	---	---	---	---	---	---	---	1
	Canopy Assembly 206H	6111706010	---	---	---	---	---	1	---	---	---	---
2B	Carriage Bolt, 1/4-20 x 1"	80860115	2	2	2	2	2	2	2	2	2	2
2C	Flat Washer, 1/4"	80860603	2	2	2	2	2	2	2	2	2	2
2D	Nut, Hex, 1/4-20	80860407	2	2	2	2	2	2	2	2	2	2
2E	Cerafelt Sealing Strip, 1/2" x 1" x 10'	6206001	1	1	1	1	1	1	1	1	1	1
2F	Flue Gas Baffle (*Standing Pilot 1" Burners Only) (** LP Standing Pilot 1" Burners Only) (*** Standing Pilot Models Only)	71106001	1***	---	2**	3**	4**	5**	6**	7*	8*	9*

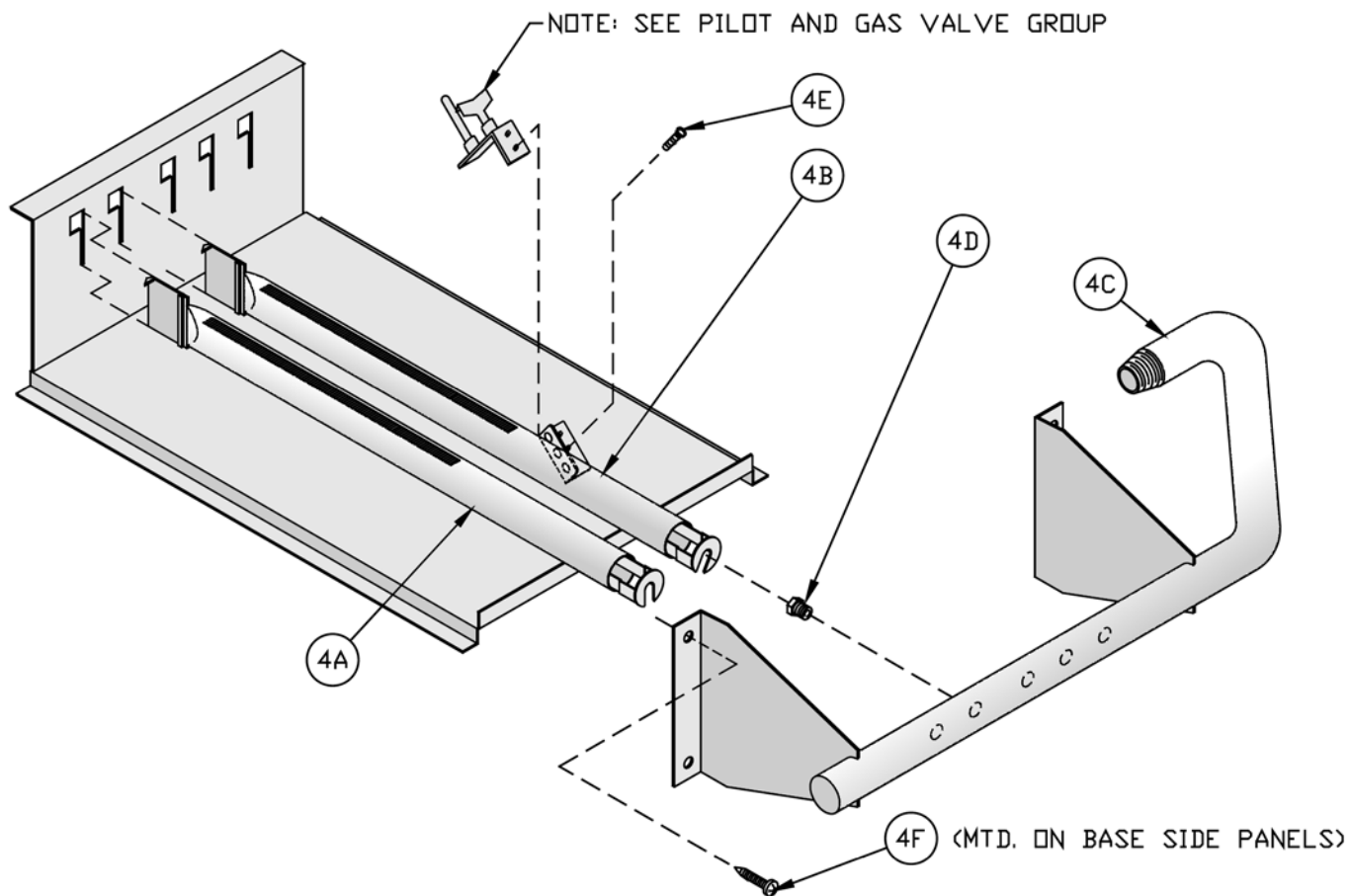


Section Assembly and Canopy Group

THIS PAGE LEFT INTENTIONALLY BLANK

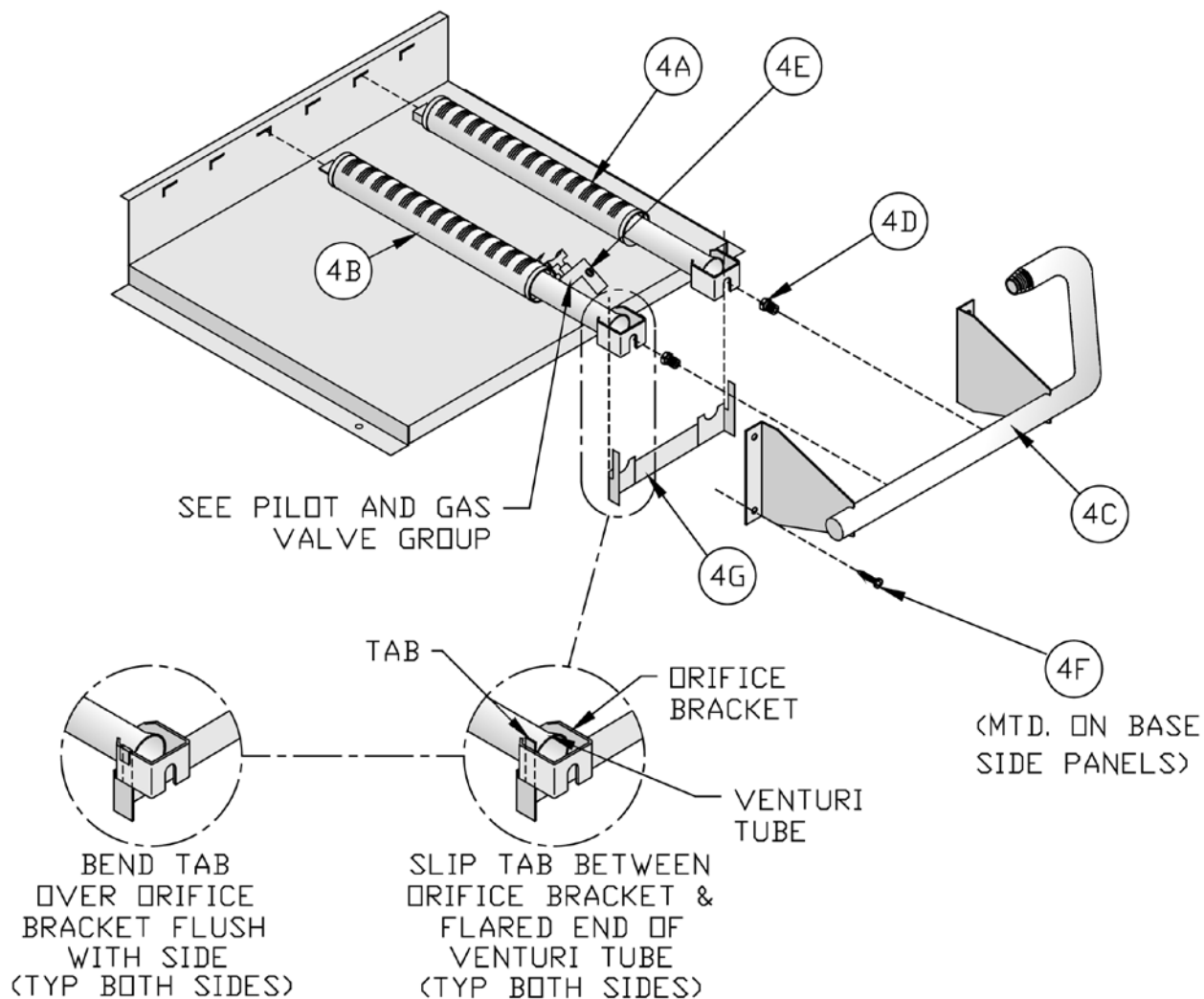
Key No.	Description	Boiler Size	Part No.	Qty.
3. Base Assembly Continued				
3C	Base Front Panel Assembly	202	618600241	1
		202X	618600341	1
		203	618600341	1
		204	618600441	1
		205	618600541	1
		206	618600641	1
		207	618600741	1
		208	618600841	1
		209	618600941	1
		210	618601041	1
3D	Burner Tray (1" Main Burners)	202	718600205	1
		202X	718600305	1
		203	718600305	1
		204	718600405	1
		205	718600505	1
		206	718600605	1
		207	718600705	1
		208	718600805	1
		209	718600905	1
		210	718601005	1
	Burner Tray (40mm Main Burners)	202	718600206	1
		202X	71806037	1
		203	71806037	1
		204	71806047	1
		205	71806057	1
		206	71806067	1
		207	71806077	1
		208	718600806	1
		209	718600906	1
		210	718601006	1

Key No.	Description	Boiler Size	Part No.	Qty.
3. Base Assembly Continued				
3E	Base Leg Assembly	All	6186001	4
3E1	Base Leg	All	71860021	4
3E2	Nylon Glide	All	8186006	4
3F	Burner Access Panel	202	718600261	1
		202X	718600361	1
		203	718600361	1
		204	718600461	1
		205	718600561	1
		206	718600661	1
		207	718600761	1
		208	718600861	1
		209	718600961	1
		210	718601061	1
3G	Cerafelt Sealing Strip, 1" x 2" x 10' (Section Assembly to Base)	All	6206002	1
3H	Self-Tapping Screw, 1/4" -20 x 1/2"	202 thru 206	80860700	20
		207 thru 210	80860700	21
3J	Self-Tapping Screw, 5/16" -18 x 1-1/4"	All	80860717	4
3K	Flat Washer, 5/16", USS	All	80860601	4
3L	Hex Lock Nut, 5/16 -18	All	80860464	4



**Manifold and Main Burners
(1 Inch Main Burners)**

Key No.	Description	Part No.	Quantity									
			202	202X	203	204	205	206	207	208	209	210
4. Manifold and Main Burners (1 Inch Main Burners Only)												
4A	Main Burner	8236099	1	2	2	4	6	8	11	13	15	17
4B	Main Burner with Pilot Bracket	-----	See Table Below									
4C	Manifold	82260023	1	---	---	---	---	---	---	---	---	---
		82260033	---	1	1	---	---	---	---	---	---	---
		82260043	---	---	---	1	---	---	---	---	---	---
		82260053	---	---	---	---	1	---	---	---	---	---
		82260063	---	---	---	---	---	1	---	---	---	---
		82260073	---	---	---	---	---	---	1	---	---	---
		82260083	---	---	---	---	---	---	---	1	---	---
		82260093	---	---	---	---	---	---	---	---	1	---
		82260103	---	---	---	---	---	---	---	---	1	
4D	Main Burner Orifice	-----	See Table Below									
4E	Screw, Machine, Slotted Round Head, #10 -32 x 3/16" (Standing Pilot)	80860800	2	2	2	2	2	2	2	2	2	2
	Screw, Machine, Philips Head w/Captive Lockwasher, #10 -32 x 1/4" (Electronic Ignition)	80860874	1	1	1	1	1	1	1	1	1	1
4F	Screw, Self Tapping, Philips Pan Head, 1/4 - 20 x 1/2"	80860700	4	4	4	4	4	4	4	4	4	4
4B. 1 Inch Main Burner with Pilot Bracket, 24-volt Continuous Ignition (Standing Pilot) Natural Gas Only												
4B	Main Burner with 70° Q350 Pilot Bracket and Offset Lancings	8236097	1	1	1	1	1	1	1	---	---	---
	Main Burner with 60° Pilot Bracket	8236098	---	---	---	---	---	---	---	1	1	1
4B. 1 Inch Main Burner with Pilot Bracket, 24-volt Continuous Ignition (Standing Pilot) LP Gas Only												
4B	Main Burner with 45° Pilot Bracket	8236111	---	---	1	1	1	1	1	1	1	1
4B. 8 Inch Main Burner with Pilot Bracket, Electronic Ignition Only												
4B	Main Burner with 60° Pilot Bracket	8236098	1	1	1	1	1	1	1	1	1	1
4D. 1 Inch Main Burner Orifices, Natural Gas, Normal Altitude, U.S.A. and Canada												
4D	Main Burner Orifice, #47 (White)	822710	2	3	---	---	---	---	12	14	16	18
	Main Burner Orifice, #45 (Pink)	822711	---	---	3	5	7	9	---	---	---	---
4D. 1 Inch Main Burner Orifices, LP/Propane, Normal Altitude, U.S.A. and Canada												
4D	Main Burner Orifice, 1.25 mm (Purple)	822705	2	---	---	5	7	9	---	---	---	---
	Main Burner Orifice, #55 (Green)	822708	---	---	3	---	---	---	---	---	---	---
	Main Burner Orifice, 3/64" (Blue)	822704	---	3	---	---	---	---	12	14	16	18

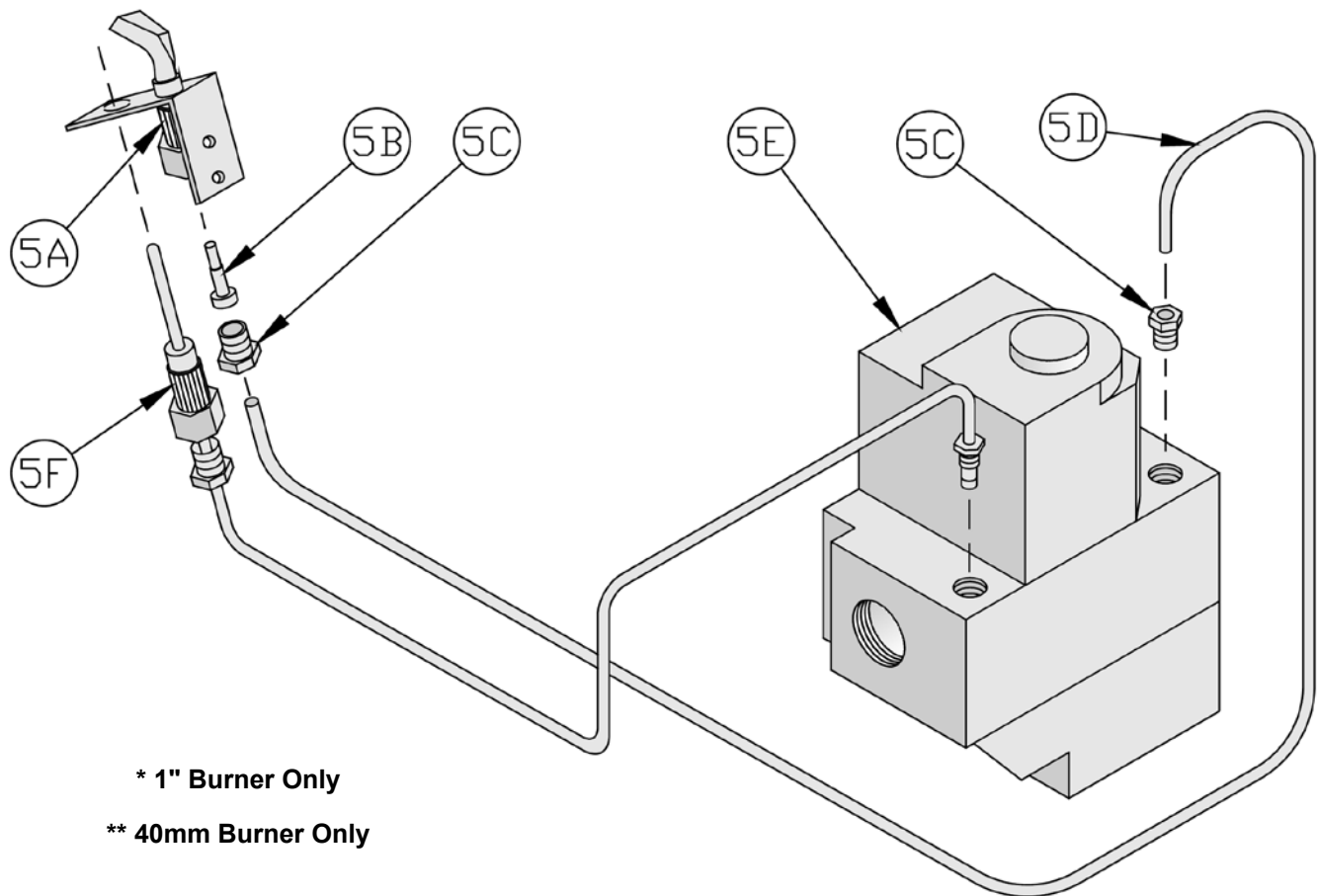


**Manifold and Main Burners
(40mm Main Burners)**

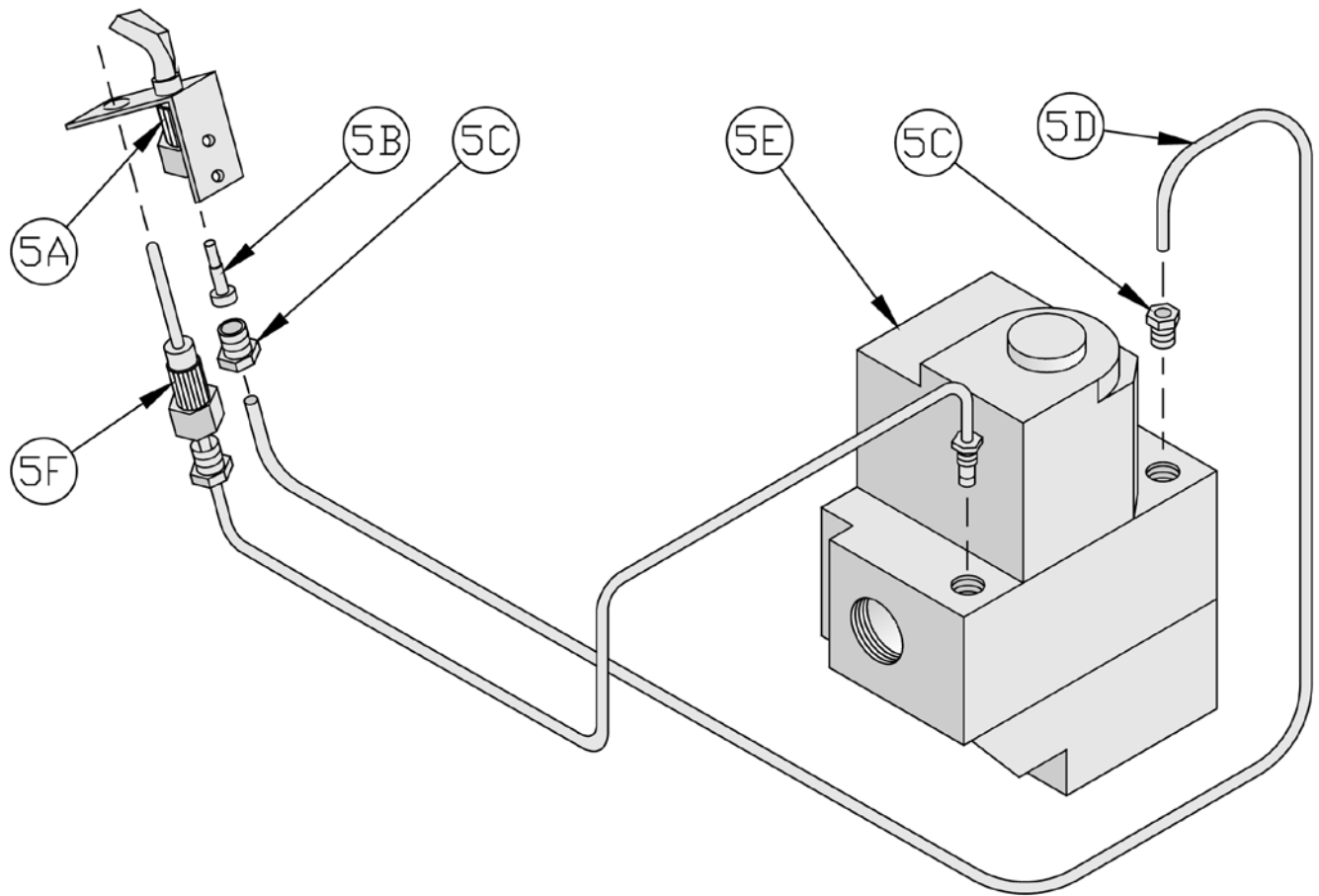
Key No.	Description	Part No.	Quantity								
			202X	203	204	205	206	207	208	209	210
4. 40 MM Main Burners Only											
4A	Main Burner	8236135	1	1	2	3	4	5	6	7	8
4B. 40 MM Main Burner, Electronic Ignition Only											
4B	Main Burner with 48° Pilot Bracket	8236143	---	---	---	---	---	---	---	---	---
	Main Burner with 41° Pilot Bracket	8236136	1	1	1	1	1	1	1	1	1
4B. 40 MM Main Burner, 24-volt Continuous Ignition (Standing Pilot) Natural Gas Only											
4B	Main Burner with 48° Pilot Bracket	8236143	1	1	1	1	1	1	1	1	1
	Main Burner with 41° Pilot Bracket	8236136	---	---	---	---	---	---	---	---	---
4B. 40 MM Main Burner, 24-volt Continuous Ignition (Standing Pilot) LP Gas Only											
4B	Main Burner with 48° Pilot Bracket	8236143	1	---	---	---	---	---	---	---	---
	Main Burner with 41° Pilot Bracket	8236136	---	1	1	1	1	1	1	1	1

Key No.	Description	Part No.	Quantity									
			202X	203	204	205	206	207	208	209	210	
4. 40 MM Main Burners Only (Continued)												
4C. 40MM Main Burner Manifold												
4C	Manifold	82260028	---	---	---	---	---	---	---	---	---	---
		82260038	1	1	---	---	---	---	---	---	---	---
		82260048	---	---	1	---	---	---	---	---	---	---
		82260058	---	---	---	1	---	---	---	---	---	---
		82260068	---	---	---	---	1	---	---	---	---	---
		82260078	---	---	---	---	---	1	---	---	---	---
		82260088	---	---	---	---	---	---	1	---	---	---
		82260098	---	---	---	---	---	---	---	1	---	---
		82260108	---	---	---	---	---	---	---	---	---	1
4D. 40 MM Main Burner, Natural Gas, 2001-5000 Ft. USA Only												
4D	#43	822713	2	---	---	---	---	---	---	---	---	---
	#39	822727	---	2	3	---	---	---	---	---	---	---
	#38	822720	---	---	---	4	5	6	7	8	9	9
4D. 40 MM Main Burner, LP Gas, 2001-5000 Ft. USA Only												
4D	#54	822734	2	---	---	---	---	---	---	---	---	---
	#53	822722	---	2	3	4	5	6	7	8	9	9
4D. 40 MM Main Burner, Natural Gas, 5001-9000 Ft. USA Only												
4D	#41	822729	N/A	2	3	---	---	---	---	---	---	---
	#40	822728	---	---	---	4	5	6	7	8	9	9
4D. 40 MM Main Burner, LP Gas, 5001-9000 Ft. USA Only												
4D	#54	822734	N/A	2	---	---	---	---	---	---	---	---
	#53	822722	---	---	3	4	5	6	7	8	9	9
4D. 40 MM Main Burner, Natural Gas, 2001-4500 Ft. Canada Only												
4D	#37	822719	N/A	2	3	4	---	---	---	---	---	---
	#36	822771	---	---	---	---	5	6	7	8	9	9
4D. 40 MM Main Burner, LP Gas, 2001-4500 Ft. Canada Only												
4D	#52	822721	N/A	2	3	4	5	6	7	8	9	9
4E	Screw, Machine, Slotted Round Head, #10-32 x 3/16" (Standing Pilot)	80860800	2	2	2	2	2	2	2	2	2	2
	Screw, Machine, Philips Head w/Captive Lockwasher, #10-32 x 1/4" (Electronic Ignition)	80860874	1	1	1	1	1	1	1	1	1	1
4F	Screw, Self Tapping, Philips Pan Head, 1/4 -20 x 1/2"	80860700	4	4	4	4	4	4	4	4	4	4
4G	Injection Shield Assembly	71860__62	A/R	A/R	A/R	A/R	A/R	A/R	A/R	A/R	A/R	A/R

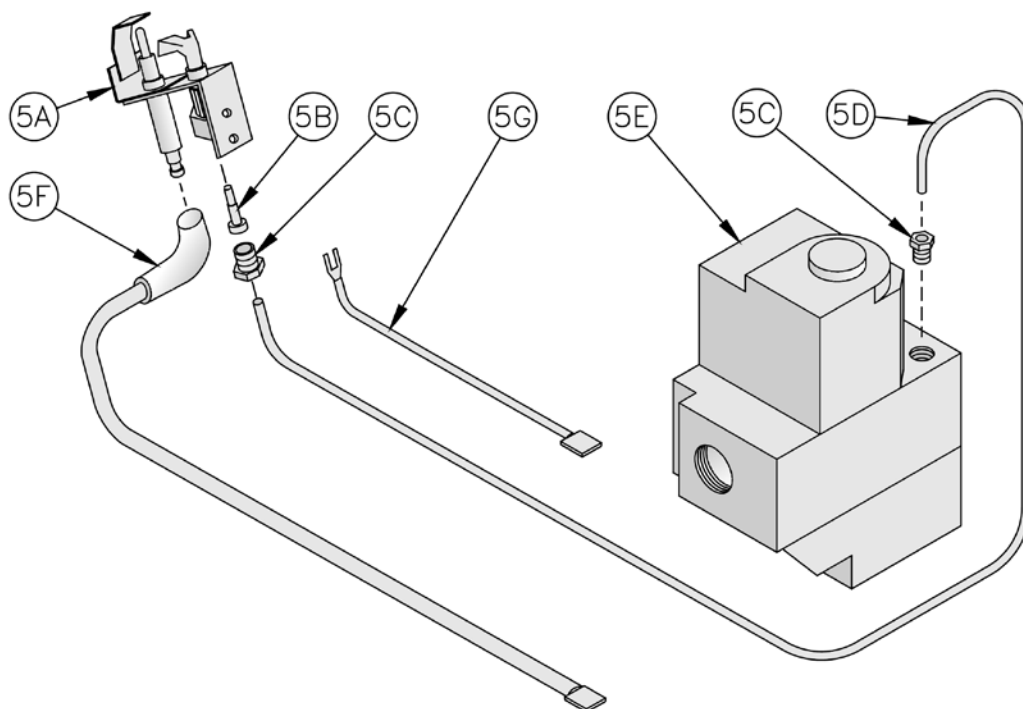
__ : number of cast iron sections



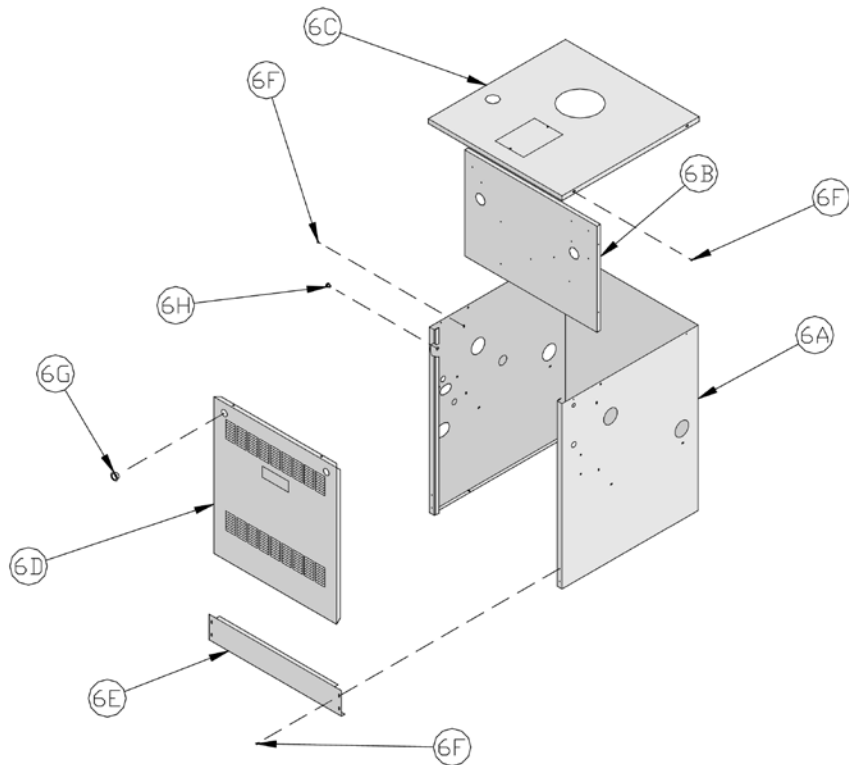
Key No.	Description	Part No.	Quantity									
			202	202X	203	204	205	206	207	208	209	210
5. Pilot Burner and Gas Valve, 24-volt Continuous Ignition, Natural Gas (1 Inch and 40mm Main Burners)												
5A	Pilot Burner, Honeywell Q350A1321	8236065	1	1	1	1	1	1	*1	---	---	---
	Pilot Burner, Honeywell Q327A1006	8236022	---	---	---	---	---	---	**1	1	1	1
5B	Pilot Orifice, Honeywell 390686-22 .012"	Included with 5A	1	1	1	1	1	1	---	---	---	---
	Pilot Orifice, Honeywell 388146AG .026"		---	---	---	---	---	---	1	1	1	1
5C	Adptr, 1/4"OD x 1/4" NPT Included w/5A & 5E	8236109	2	2	2	2	2	2	2	2	2	2
5D	Pilot Tubing, 1/4" OD x 30" LG	8236122	1	1	1	1	1	1	1	---	---	---
	Pilot Tubing, 1/4" OD x 40" LG	8236123	---	---	---	---	---	---	---	1	1	1
5E	Gas Valve, Honeywell VR8200C3005	81660143	1*	1*	1*	1*	1*	1*	---	---	---	---
	Gas Valve, Honeywell VR8300C4027	81660154	---	---	---	---	---	---	1*	1*	1*	1*
	Gas Valve, Honeywell VR8200C6065	100333-01	1**	1**	1**	1**	1**	1**	---	---	---	---
	Gas Valve, Honeywell VR8300C4266	100334-01	---	---	---	---	---	---	1**	1**	1**	1**
5F	Thermocouple, 30", Honeywell Q309A	8236024	1	1	1	1	1	1	1	1	1	1



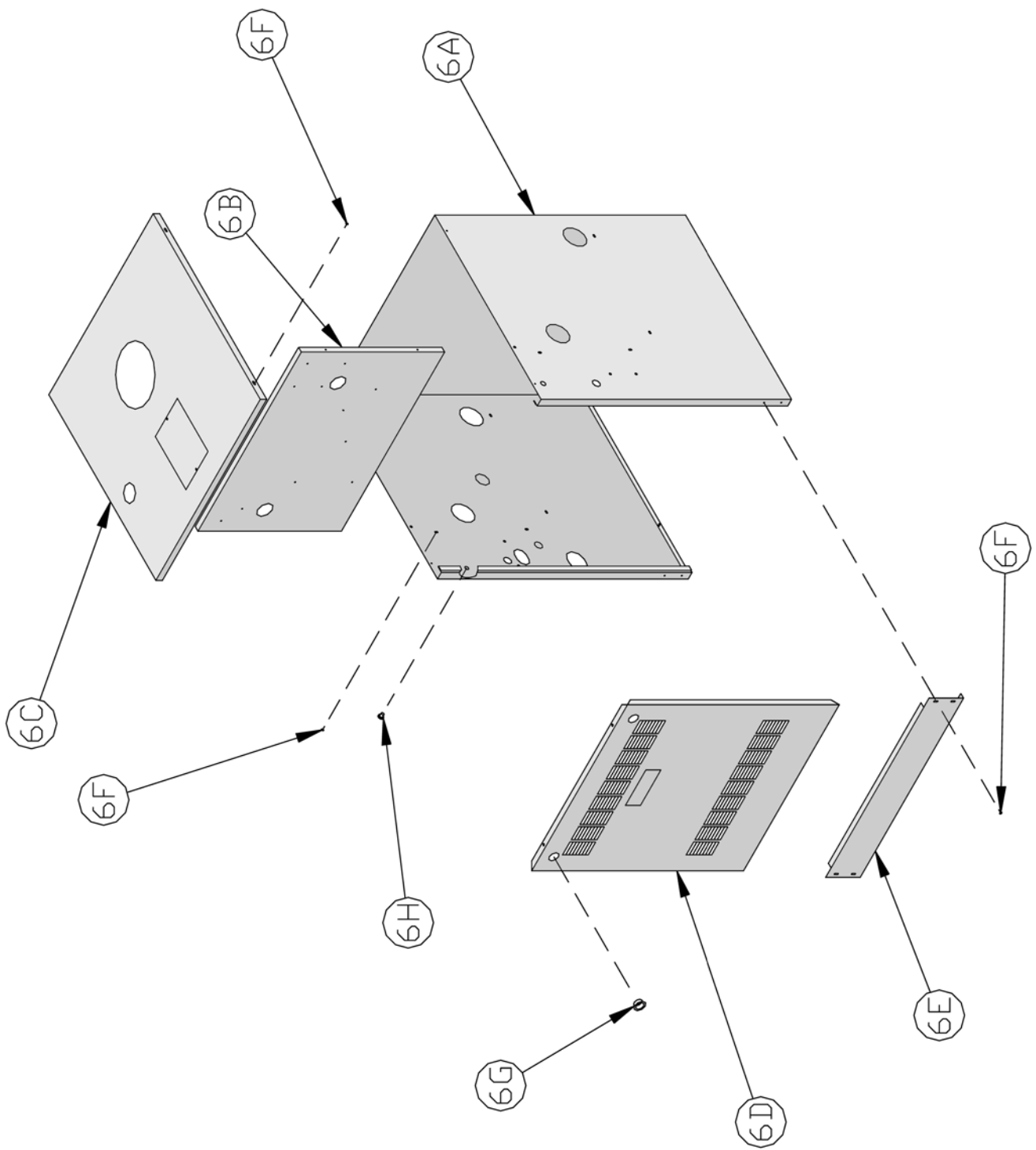
Key No.	Description	Part No.	Quantity									
			202	202X	203	204	205	206	207	208	209	210
5. Pilot Burner and Gas Valve, 24-volt Continuous Ignition, LP/Propane (1 Inch and 40mm Main Burners)												
5A	Pilot Burner, Honeywell Q327A1147	8236023	---	---	1	1	1	1	1	1	1	1
	Pilot Burner Assembly, Honeywell Q350A (Includes 5B & 5F)	8236105	1	1	---	---	---	---	---	---	---	---
5B	Pilot Orifice, Honeywell 388146KR (.014")	Included with 5A	---	---	1	1	1	1	1	1	1	1
	Pilot Orifice, Honeywell 390686-23 (.008")		1	1	---	---	---	---	---	---	---	---
5C	Adptr, 1/4"OD x 1/4" NPT Included w/5A & 5E	8236109	2	2	2	2	2	2	2	2	2	2
5D	Pilot Tubing, 1/4" OD x 30" LG	8236122	1	1	1	1	1	1	1	---	---	---
	Pilot Tubing, 1/4" OD x 40" LG	8236123	---	---	---	---	---	---	---	1	1	1
5E	Gas Valve, Honeywell VR8200C3013	81660144	1	1	1	1	1	1	---	---	---	---
	Gas Valve, Honeywell VR8300C4035	81660163	---	---	---	---	---	---	1	1	1	1
5F	Thermocouple, 30", Honeywell Q309A	8236024	1	1	1	1	1	1	1	1	1	1



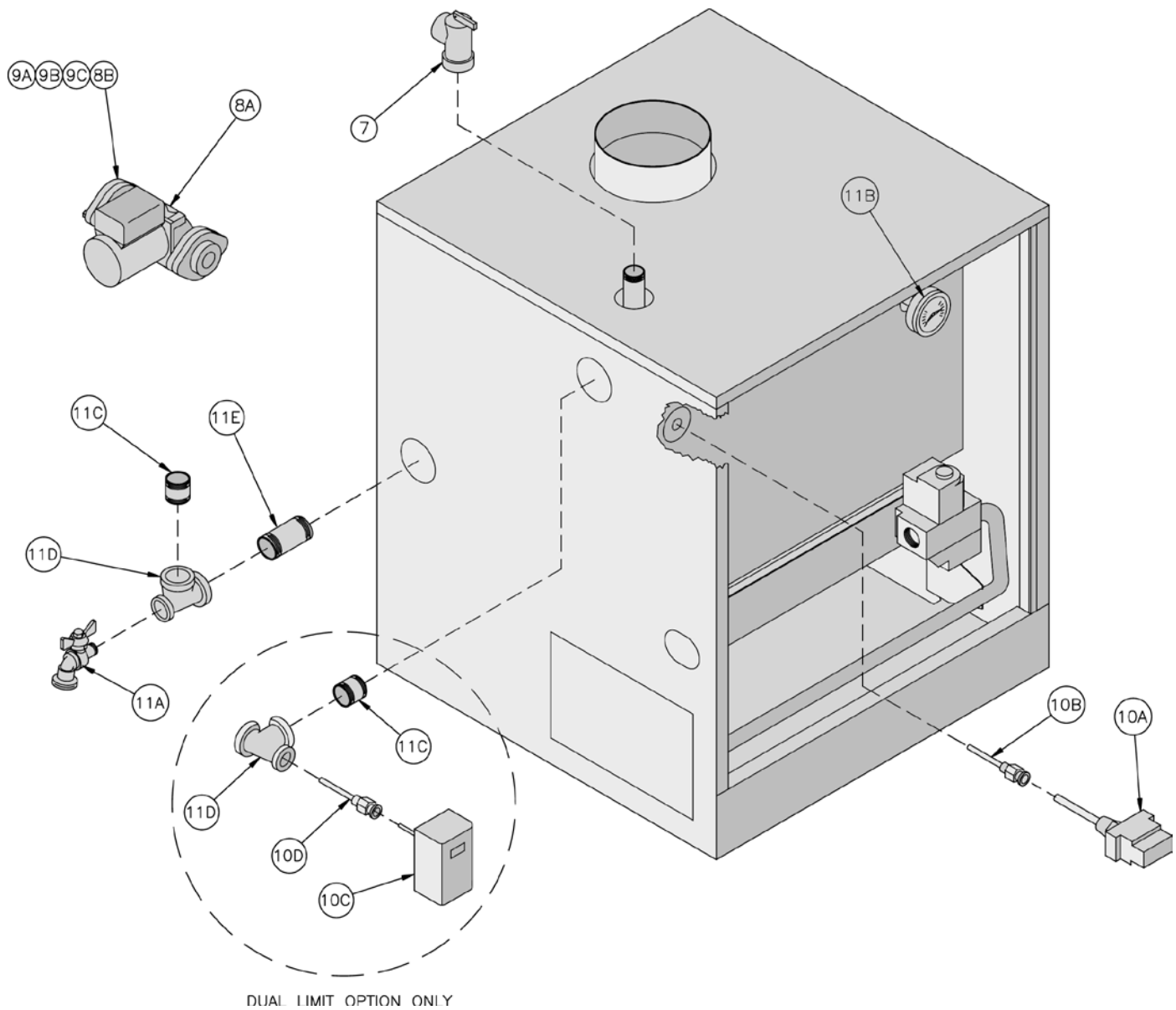
Key No.	Description	Part No.	Quantity									
			202	202X	203	204	205	206	207	208	209	210
5. Pilot Burner and Gas Valve, Electronic Ignition (EI), Natural Gas												
5A	Pilot Burner, Honeywell Q348A1002	8236072	1	1	1	1	1	1	1	1	1	1
5B	Pilot Orifice, Honeywell 388146NE	Included with 5A	1	1	1	1	1	1	1	1	1	1
5C	Compression Nut/Fitting, 1/4" OD x 1/4 C.C. (Included with 5A and 5E)	8236109	2	2	2	2	2	2	2	2	2	2
5D	Pilot Tubing, 1/4" OD x 30"	8236122	1	1	1	1	1	1	1	---	---	---
	Pilot Tubing, 1/4" OD x 40"	8236123	---	---	---	---	---	---	---	1	1	1
5E	Gas Valve, Honeywell VR8204C3007	81660145	1	1	1	1	1	1	---	---	---	---
	Gas Valve, Honeywell VR8304P4306	81660161	---	---	---	---	---	---	1	1	1	1
5F	Igniter/Sensor Cable, 36", Honeywell 394800	8236084	1	1	1	1	1	1	1	1	1	1
5G	Ground Wire Assembly	6136054	1	1	1	1	1	1	1	1	1	1
5. Pilot Burner and Gas Valve, Electronic Ignition (EI), LP/Propane												
5A	Pilot Burner, Honeywell Q348A1010	8236081	1	1	1	1	1	1	1	1	1	1
5B	Pilot Orifice, Honeywell 388146KP	Included with 5A	1	1	1	1	1	1	1	1	1	1
5C	Compression Nut/Fitting, 1/4" OD x 1/4 C.C. (Included with 5A and 5E)	8236109	2	2	2	2	2	2	2	2	2	2
5D	Pilot Tubing, 1/4" OD x 30"	8236122	1	1	1	1	1	1	1	---	---	---
	Pilot Tubing, 1/4" OD x 40"	8236123	---	---	---	---	---	---	---	1	1	1
5E	Gas Valve, Honeywell VR8204C3015	81660146	1	1	1	1	1	1	---	---	---	---
	Gas Valve, Honeywell VR8304P4314	81660160	---	---	---	---	---	---	1	1	1	1
5F	Igniter/Sensor Cable, 36", Honeywell 394800	8236084	1	1	1	1	1	1	1	1	1	1
5G	Ground Wire Assembly	6136054	1	1	1	1	1	1	1	1	1	1



Key No.	Description	Part No.	Quantity									
			202	202X	203	204	205	206	207	208	209	210
6. Jacket Assembly, Complete												
6	Jacket Assembly, Complete	604170254	1	---	---	---	---	---	---	---	---	---
		604170354	---	1	1	---	---	---	---	---	---	---
		604170454	---	---	---	1	---	---	---	---	---	---
		604170554	---	---	---	---	1	---	---	---	---	---
		604170654	---	---	---	---	---	1	---	---	---	---
		604170754	---	---	---	---	---	---	1	---	---	---
		604170854	---	---	---	---	---	---	---	1	---	---
		604170954	---	---	---	---	---	---	---	---	1	---
		604171054	---	---	---	---	---	---	---	---	---	1
6. Jacket Assembly												
6A	Jacket Wrap-Around Panel	604170215	1	---	---	---	---	---	---	---	---	---
		604170315	---	1	1	---	---	---	---	---	---	---
		604170415	---	---	---	1	---	---	---	---	---	---
		604170515	---	---	---	---	1	---	---	---	---	---
		604170615	---	---	---	---	---	1	---	---	---	---
		604170715	---	---	---	---	---	---	1	---	---	---
		604170815	---	---	---	---	---	---	---	1	---	---
		604170915	---	---	---	---	---	---	---	---	1	---
		604171015	---	---	---	---	---	---	---	---	---	1

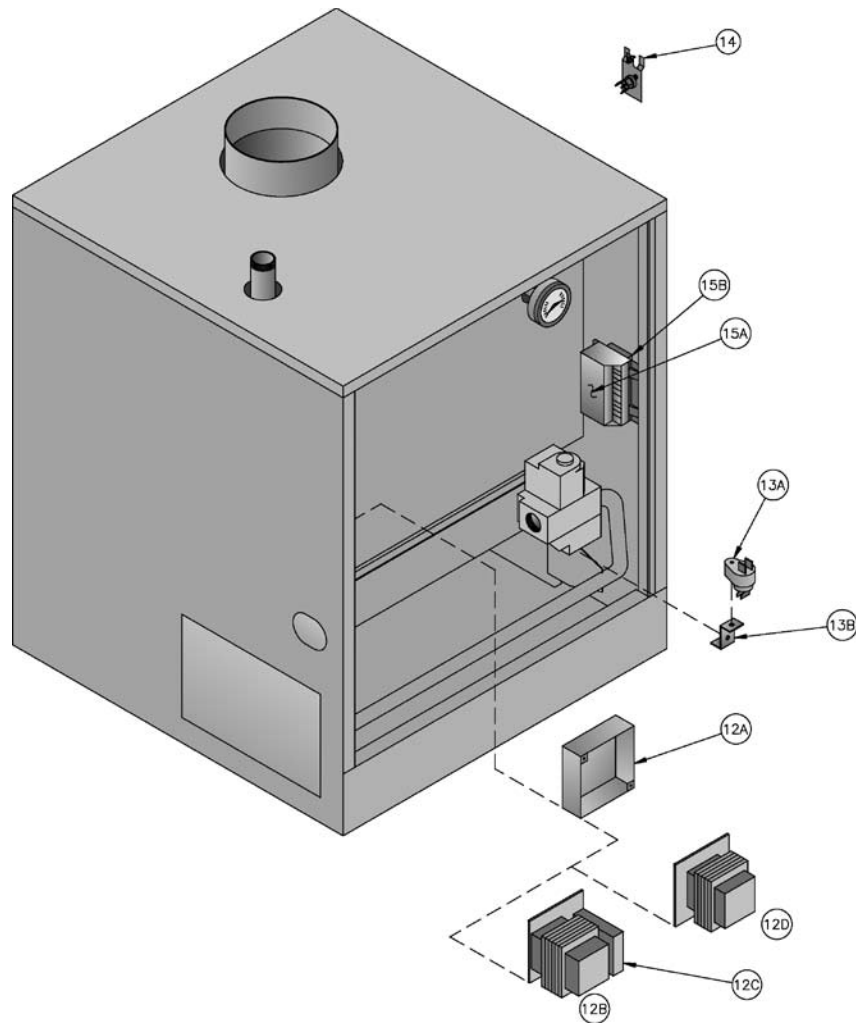


Key No.	Description	Part No.	Quantity										
			202	202X	203	204	205	206	207	208	209	210	
6. Jacket Assembly (Continued)													
6B	Jacket Vestibule Panel	604170223	1	---	---	---	---	---	---	---	---	---	---
		604170323	---	1	1	---	---	---	---	---	---	---	
		604170423	---	---	---	1	---	---	---	---	---	---	
		604170523	---	---	---	---	1	---	---	---	---	---	
		604170623	---	---	---	---	---	1	---	---	---	---	
		604170723	---	---	---	---	---	---	1	---	---	---	
		604170823	---	---	---	---	---	---	---	1	---	---	
		604170923	---	---	---	---	---	---	---	---	1	---	
		604171023	---	---	---	---	---	---	---	---	---	1	
6C	Jacket Top Panel	604170233	1	---	---	---	---	---	---	---	---	---	
		604170333	---	1	1	---	---	---	---	---	---	---	
		604170433	---	---	---	1	---	---	---	---	---	---	
		604170533	---	---	---	---	1	---	---	---	---	---	
		604170633	---	---	---	---	---	1	---	---	---	---	
		604170733	---	---	---	---	---	---	1	---	---	---	
		604170833	---	---	---	---	---	---	---	1	---	---	
		604170933	---	---	---	---	---	---	---	---	1	---	
		604171033	---	---	---	---	---	---	---	---	---	1	
6D	Jacket Front Removable Door	604170242	1	---	---	---	---	---	---	---	---	---	
		604170342	---	1	1	---	---	---	---	---	---	---	
		604170442	---	---	---	1	---	---	---	---	---	---	
		604170542	---	---	---	---	1	---	---	---	---	---	
		604170642	---	---	---	---	---	1	---	---	---	---	
		604170742	---	---	---	---	---	---	1	---	---	---	
		604170842	---	---	---	---	---	---	---	1	---	---	
		604170942	---	---	---	---	---	---	---	---	1	---	
		604171042	---	---	---	---	---	---	---	---	---	1	
6E	Jacket Lower Front Panel	604170216	1	---	---	---	---	---	---	---	---	---	
		604170316	---	1	1	---	---	---	---	---	---	---	
		604170416	---	---	---	1	---	---	---	---	---	---	
		604170516	---	---	---	---	1	---	---	---	---	---	
		604170616	---	---	---	---	---	1	---	---	---	---	
		604170716	---	---	---	---	---	---	1	---	---	---	
		604170816	---	---	---	---	---	---	---	1	---	---	
		604170916	---	---	---	---	---	---	---	---	1	---	
		604171016	---	---	---	---	---	---	---	---	---	1	
6F	Sheet Metal Screw, Type AB, Phillips Truss Head, #8 x 1/2"	80860000	26	26	26	26	26	26	26	26	26	26	
6G	Snap Bushing, Heyco SB-1093-15	8136257	2	2	2	2	2	2	2	2	2	2	
6H	Snap Bushing, Heyco SB-437-5	8136048	1	1	1	1	1	1	1	1	1	1	

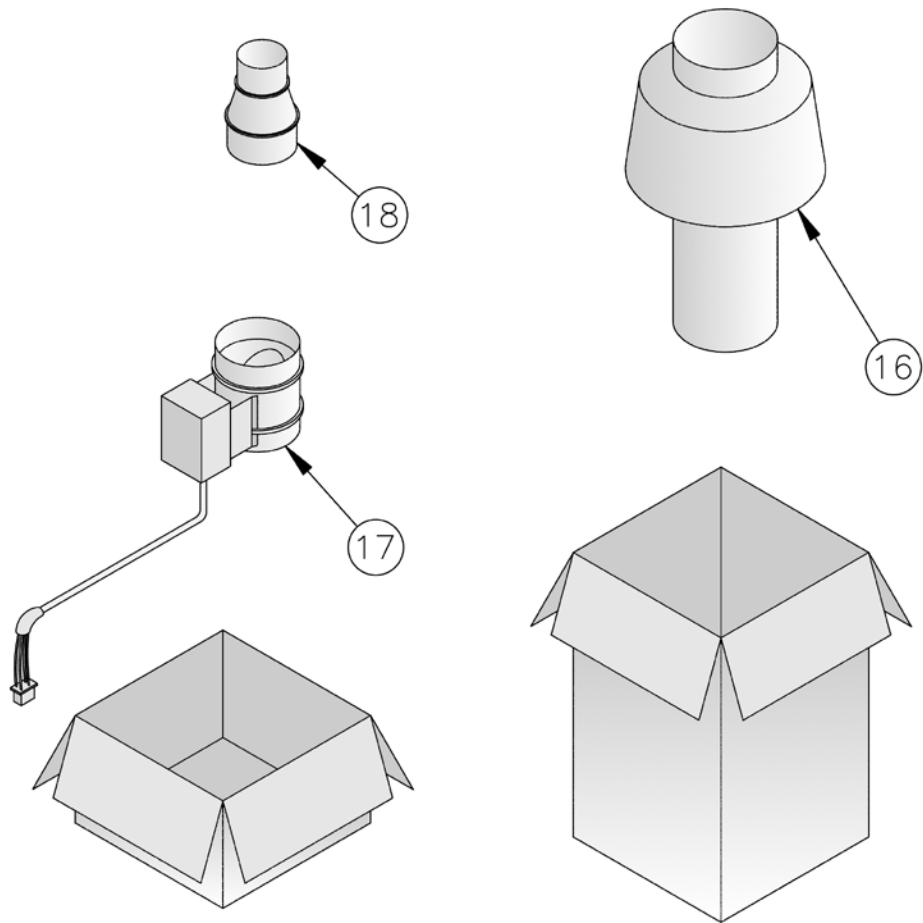


Water Trim

Key No.	Description	Part No.	Quantity
7	Safety Relief Valve, 30 psi, 3/4 NPT, Conbraco 10-408-05	81660319	1
	Safety Relief Valve, 50 psi, 3/4 NPT, Conbraco 10-303-10	101662-01	1
8. Circulator, Bell & Gossett SLC-30 Option (Intermittent and Continuous Circulation Only)			
8A	Circulator with Gaskets, Bell & Gossett NRF-22	8056174	1
8B	Gasket, Bell & Gossett NRF-22	806602029	2
8. Circulator, Grundfos Option (Intermittent and Continuous Circulation Only)			
8A	Circulator with Gaskets, Grundfos UP 15-42F	8056173	1
8B	Gasket, Grundfos 510179	806602016	2
8. Circulator, Taco 007 Option (Intermittent and Continuous Circulation Only)			
8A	Circulator with Gaskets, Taco 007F	8056170	1
8B	Gasket, Taco '00' Series	806602006	2
8. Circulator, Taco 0010 Option (Intermittent and Continuous Circulation Only)			
8A	Circulator with Gaskets, Taco 0010	8056176	1
8B	Gasket, Taco '00' Series	806602006	2
9. Miscellaneous Circulator Hardware (Intermittent and Continuous Circulation Only)			
9A	Flange, 1-1/4 NPT	806602013	2
9B	Screw, Cap Hex Head, 7/16 -14 x 1-1/2"	80861301	4
9C	Nut, Hex, 7/16 -14	80860406	4
10. Limit Control			
10A	Limit, Honeywell L4080D1234	100189-01	1
10B	Well, 1/2 NPT (Included w/10A)	----	1
10C	Limit, Honeywell L4080B1212 (Dual Limit Only)	80160474	1
10D	Well, 3/4 NPT, Honeywell 123870A (Dual Limit Only)	80160426	1
11. Miscellaneous Trim			
11A	Drain Valve, Conbraco 35-302-03	806603061	1
11B	Temperature - Pressure Gauge	8056164U	1
11C	Nipple, 1-1/4 NPT x 3"	806600005	1 or 2
11D	Tee, 1-1/4 x 3/4 x 1-1/4 NPT	806601002	1 or 2
11E	Nipple, 1-1/4 NPT x 4"	806600028	1



Key No.	Description	Part No.	Quantity
12. Transformer/Relay Assembly (Intermittent Circulation Only)			
12A	Junction Box, 4" x 4" x 1-1/2"	8136259	1
12B	Transformer/Relay, Honeywell R8285D5001	80160155U	1
12C	Relay, Honeywell R8222U1006	80160096U	1
12. Transformer (Continuous and Gravity Circulation Only)			
12A	Junction Box, 4" x 4" x 1-1/2"	8136259	1
12D	Transformer, 40VA, Honeywell AT140D1012 or AT72D1188	80160039	1
13. Flame Rollout Switch			
13A	Flame Rollout Switch	80160044	1
13B	Flame Rollout Switch Mounting Bracket	7186018	1
14. Blocked Vent Switch			
14	Blocked Vent Switch Replacement Assembly	6016058	1
15. Ignition Module (EI Only)			
15A	Ignition Module, Honeywell S8610M3009	100958-01	1
15B	Ignition Module Support Bracket	7016001	1



VENT DAMPER CARTON

DRAFT HOOD CARTON

Key No.	Description	Part No.	Quantity									
			202	202X	203	204	205	206	207	208	209	210
16. Draft Hood Carton												
16	Draft Hood	8116067	1	1	1	---	---	---	---	---	---	---
		8111702	---	---	---	1	---	---	---	---	---	---
		8111703	---	---	---	---	1	1	---	---	---	---
		8111704	---	---	---	---	---	---	1	1	---	---
		8111705	---	---	---	---	---	---	---	---	1	1
17. Vent Damper												
17	4"	8116321	1	1	1	---	---	---	---	---	---	---
	5"	8116322	---	---	---	1	---	---	---	---	---	---
	6"	8116323	---	---	---	---	1	1	---	---	---	---
	7"	8116324	---	---	---	---	---	---	1	1	---	---
	8"	8116325	---	---	---	---	---	---	---	---	1	1
18. Vent Reducer												
18	Reducer, 4" x 3"	1	---	---	---	---	---	---	---	---	---	---